

New Farmington High School

Construction Tour Guidebook



Opening Fall 2009



The Beginnings

The process that has led to the construction of the new Farmington High School actually started in 2002 with the creation of the Facilities Planning Task Force. Looking at continued rapid growth in School District 192, the Task Force was charged with developing a plan to provide facilities needed to educate Farmington students well into the future.

The plan that was adopted by the Farmington Area School Board included constructing a new high school to serve grades 9-12, conversion of the current high school and Farmington Middle School West to be middle schools serving grades 6-8, and conversion of Farmington Middle School East into the district's fifth elementary school. In February 2005, voters approved a bond referendum that provided funding to make these changes, as well as construct a sixth elementary school in the future.

More than 100 residents and staff members attended the high school groundbreaking celebration on Oct. 1, 2006. Since then, construction has continued on schedule. The new Farmington High School will welcome its first students at the start of the 2009-10 school year.



Above, ground was broken on Oct. 1, 2006. Those who attended the ceremony got a sneak peek at plans and designs.



Big Opportunities ... Small Communities

More than any single part of the building, what will define students' experiences at the new Farmington High School is the Small Learning Communities concept.

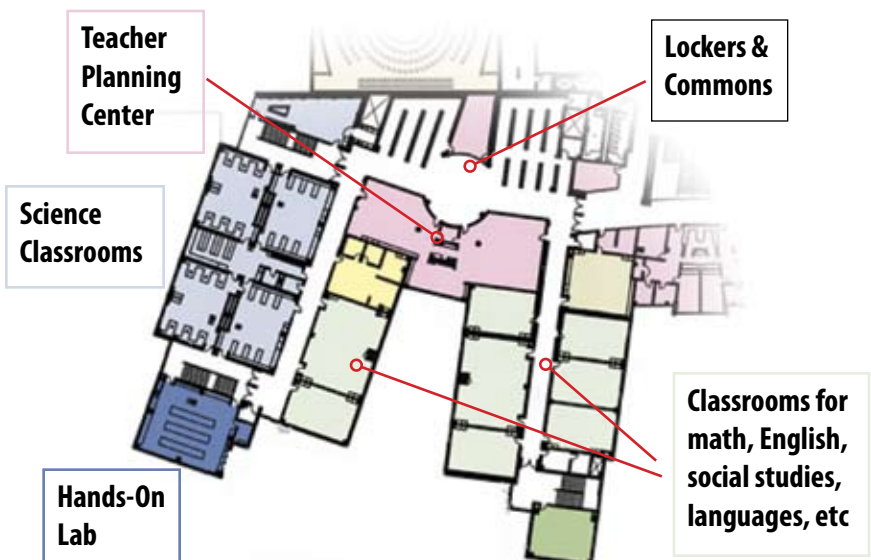
The school is essentially divided into four identical smaller schools that serve about 400 to 500 students. Each of the four communities includes flexible classroom spaces for subjects like English, history, civics, world languages and mathematics. There are also flexible science labs, special education spaces, teacher planning centers, and locker/commons areas.

With this small learning community design, students will be able to take most of their classes in one area. They will no longer have to walk across the building to get from math to science, and then back again for English and Spanish. In the halls, they will pass mostly students in their own grade, and see teachers who teach their classes.

The design also promotes interdisciplinary collaboration among teachers. In other words, teachers will have greater access to the expertise and ideas of other teachers, and the proximity of their classes will make it easier for world literature and history classes to combine for a lesson on Victorian England.

A SCHOOL WITHIN A SCHOOL

Students will spend most of each day within one of four classroom wings laid out like the one below, helping the 2000-student school feel more like 500.



New Farmington High School

Main Level Floor Plan

1. Main Student / Spectator Entrance

Students will enter on the building's east side and on the main (middle) level of the three-story building. This will also be the **primary entrance** for spectators for indoor athletics events and concerts. The entrance has a built-in security/ticket booth.

2. Main Gymnasium

The **main gymnasium** includes three full-size basketball courts and seating for about 1,900 spectators, who will enter from the main level while athletes and coaches will enter from the lower level.

3. Cafeteria

The **cafeteria** is built to hold up to 600 students at a time. Windows on the north and the building's central skylight help ensure the space has ample natural light.

4. Tiger Stadium

The school's stadium field - **Tiger Stadium** - is just steps away from the building's north wall, making it extremely accessible for physical education classes and student activities.

5. Commons/Teacher Planning Center

There are four **student commons** areas in the school, one on each side of the building on both the main and upper levels. Each commons area serves the students of one small learning community, helping keep the feeling of a small school. The **teacher planning centers** are designed to ensure full-use of classroom spaces and encourage interdisciplinary collaboration.

6. Classroom Wings

Farmington High School features four identical classroom wings. Each will support a **small learning community** of 400-500 students. The classroom areas are designed to be flexible and support many different kinds of instruction. This means students will take many of their classes in one area of the building, rather than walking from department to department. See Page 3 for more on Small Learning Communities.

7. Hands-On Science Labs

Each classroom wing will have a **hands-on science lab** that can accommodate various science courses.

8. Recital Hall

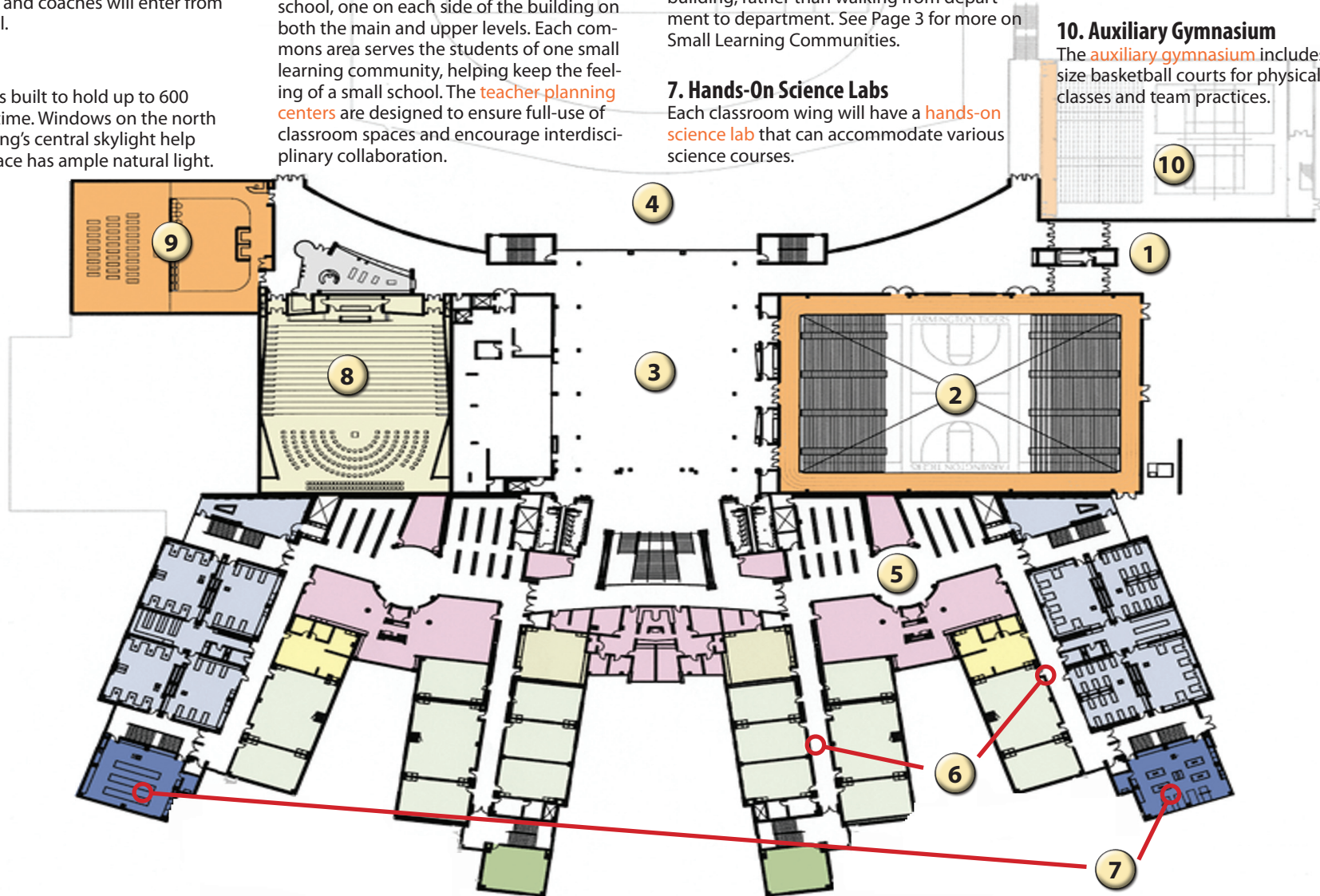
One of the most unique features of the new high school will be its **recital hall**. With seating for almost 800, the space is specifically designed for music concerts and small theater productions. Larger theater performances will continue at the current high school's auditorium.

9. Fitness Area

The **fitness area** will be used for physical education, dance, cheer leading and public use.

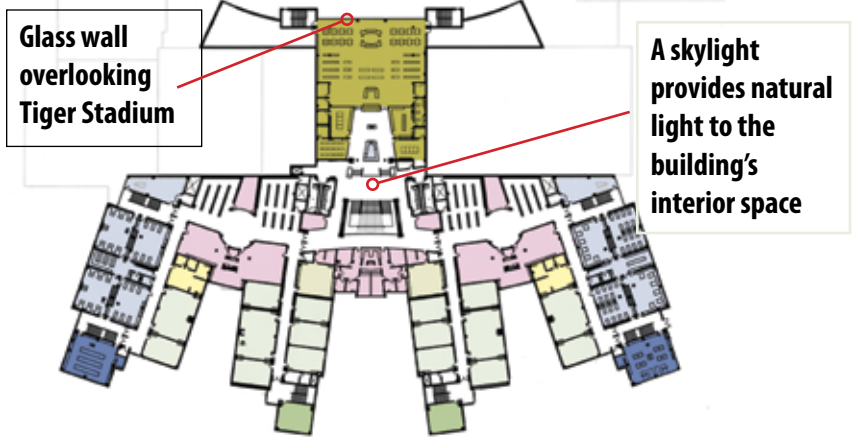
10. Auxiliary Gymnasium

The **auxiliary gymnasium** includes two full-size basketball courts for physical education classes and team practices.



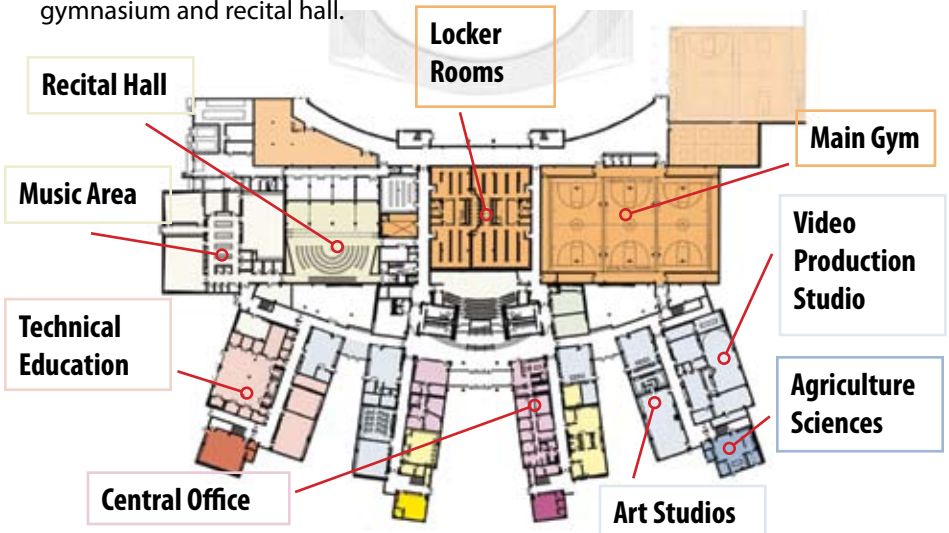
Upper Level Floor Plan

The upper level of the new Farmington High School includes classroom wings that are identical to the main level. The main feature of the upper level is the media center. Along with traditional resources like books and magazines, the media center includes space for computer labs, quiet reading areas, and a career and college guidance area. The space is dominated by the glass wall on the north end, which provides comfortable natural light.



Lower Level Floor Plan

Farmington High School's lower level includes classroom and lab space for technical education, family and consumer sciences, art, video and audio technology, agricultural sciences and music classes. It's also the competition and performance level of more community-oriented spaces like the main gymnasium and recital hall.

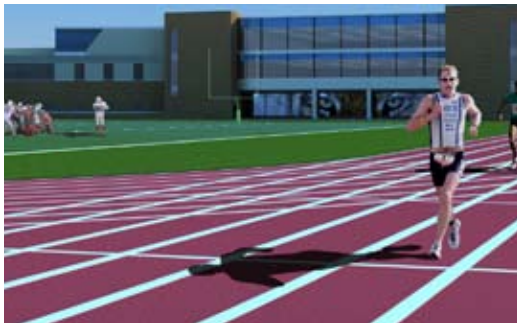


Unique Spaces

The new Farmington High School will feature a lot of unique spaces. These facilities will make Farmington an example of educational excellence and serve as gathering spaces for the community and organizations from around the state and nation. Here are just three of them.

Recital Hall

The recital hall will be a one-of-a-kind music performance space. Seating nearly 800, the hall will be a perfect showcase for talented Farmington students, as well as regional bands, choirs, orchestras and even small theater productions. It's also fully wired for data, making it an ideal spot for large lectures and seminars.



Tiger Stadium

The stadium field at Farmington High School will be intricately woven into daily life at the school. It is just steps outside the building, and because it will feature artificial turf, it will be used by physical education classes almost daily. It's top loading bleachers will give fans and players the feeling of being on a college campus.

Hands-On Labs

Flexible hands-on science labs are featured in all four small learning communities. These labs feature numerous working spaces for students and the flexibility to pursue unique learning opportunities including botany. These labs along with other science spaces will also allow students and faculty to work together in ways not possible now.



Small Lecture Hall

Showing the building's true "leave no space unused" design, even the area under the main staircase will be a learning space. A small lecture hall, seating about 150 students, is built on the lower level just below the stairway. It may be used by teachers who are combining their classes for a common lecture, guest speakers for community events, a screening of student-made films, black box theater, or town hall forums.

New Farmington High School

Facts & Figures

INTERIOR SPACES

Capacity: 2000 students

Teaching spaces: 116

Walking distance between two farthest teaching spaces: 966 feet (current FHS is 1,018 feet)

Recital Hall Capacity: 796

Competition Gym Capacity: 1,900

Total number of stair steps: 756

Steps in the Grand Stair: 68

CAMPUS SPACES

Trees on site: 412

Seedlings planted: 6,200

Parking spaces: 929

CONSTRUCTION INFORMATION

4 miles of underground piping

15,000 cubic yards of concrete

1,900 tons of structural steel

450,000 square feet of metal decking

225,000 sq ft of interior and exterior precast concrete wall panels

10,000 sheets of drywall

744 doors

28 miles of plumbing piping

200 tons of metal ductwork

66 miles of conduit

179 miles of electrical wire



The Grand Stair



Thank you for touring the new Farmington High School.

For more information, go online to www.farmington.k12.mn.us/newfhs.